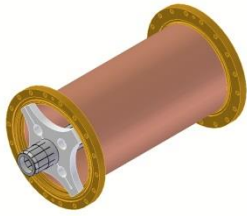


8 3/16" Mitre Elbows



90° Mitre Elbow (Unequal Leg)

- 90° reinforced elbow, one long and one short leg. Includes one anchor connector, one O-ring, and one hardware kit. Swivel flanges.
- 45° elbow, one long and one short leg. Includes one anchor connector, one O-ring, and one hardware kit. Swivel flanges.

T/L Size	Catalog Number	Part Number	Impedance in Ohms	Length 1	Length 2	Approx. Wt. [kg]
8 3/16"	877-018	R00722665xx	75	12"	24"	50 lbs [22.68]

90° Elbow (Unequal Leg) Reinforced

T/L Size	Catalog Number	Part Number	Impedance in Ohms	Length 1	Length 2	Approx. Wt. [kg]
8 3/16"	877-022	R00722666xx	75	12"	24"	55 lbs [24.95]

90° Mitre Elbow (Equal Leg)

T/L Size	Catalog Number	Part Number	Impedance in Ohms	Length	Approx. Wt. [kg]
8 3/16"	877-017	R00722661xx	75	9"	40 lbs [18.14]

90° Mitre Elbow (Equal Leg) Reinforced

T/L Size	Catalog Number	Part Number	Impedance in Ohms	Length	Approx. Wt. [kg]
8 3/16"	877-021	R00722662xx	75	12"	45 lbs [20.41]

