

The DCR-H/HDR-H antenna is a low-power version of the DCR-C/ HDR-C and is available in one through twelve bays with an input power rating up to 12 kW. Each array is supplied with an input fine matcher for field optimization. For situations where ice formation is common, the arrays can be equipped with optional electrical deicers or radomes. The antenna is DC grounded for lightning protection and does not require shorting stubs. Each array is supplied with an input fine matcher for field optimization.

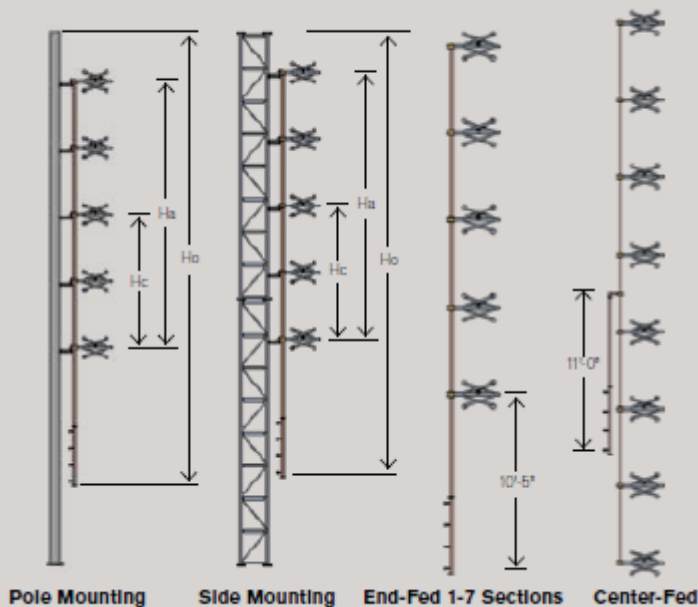
Specifications:

- DCR-H: Right Hand Circularly Polarized
- HDR-H: Left Hand Circularly Polarized
- DCR-H/HDR-H IBOC compatible
- Interleaved provides >-40dB of isolation
- Stainless steel elements
- Ideal for Class A and B stations
- 4 kW for a single bay
- Fine matcher included
- Radomes or integral deicers optional
- VSWR field adjustable
- No circulators required

Elevation

Azimuth

Mounting Dimensions



CONTACT FACTORY

Electrical Specifications

Antenna Type	Power Gain	dB	Power Gain 1/2	dB 1/2	Power Rating!
DCR-H1	0.46	-3.37	-	-	4
HDR-H1	0.46	-3.37	-	-	4
DCR-H2	1	0	0.7	-1.55	8
HDR-H2	1	0	0.7	-1.55	8
DCR-H3	1.5	1.76	1	0	12
HDR-H3	1.5	1.76	1	0	12
DCR-H4	2.1	3.22	1.3	1.14	12
HDR-H4	2.1	3.22	1.3	1.14	12
DCR-H5	2.7	4.31	1.5	1.76	12
HDR-H5	2.7	4.31	1.5	1.76	12
DCR-H6	3.2	5.05	1.8	2.55	12
HDR-H6	3.2	5.05	1.8	2.55	12
DCR-H7	3.8	5.8	2.1	3.22	12
HDR-H7	3.8	5.8	2.1	3.22	12
DCR-H8	4.3	6.34	2.4	3.8	12
HDR-H8	4.3	6.34	2.4	3.8	12
DCR-H10	5.5	7.4	3	4.77	12
HDR-H10	5.5	7.4	3	4.77	12
DCR-H12	6.6	8.2	3.6	5.56	12
HDR-H12	6.6	8.2	3.6	5.56	12

Mechanical Specifications

Antenna Type	Power Gain	dB	Power Gain 1/2	dB 1/2	Power Rating!
DCR-H1	0.46	-3.37	-	-	4
HDR-H1	0.46	-3.37	-	-	4
DCR-H2	1	0	0.7	-1.55	8
HDR-H2	1	0	0.7	-1.55	8
DCR-H3	1.5	1.76	1	0	12
HDR-H3	1.5	1.76	1	0	12
DCR-H4	2.1	3.22	1.3	1.14	12
HDR-H4	2.1	3.22	1.3	1.14	12
DCR-H5	2.7	4.31	1.5	1.76	12
HDR-H5	2.7	4.31	1.5	1.76	12
DCR-H6	3.2	5.05	1.8	2.55	12
HDR-H6	3.2	5.05	1.8	2.55	12
DCR-H7	3.8	5.8	2.1	3.22	12
HDR-H7	3.8	5.8	2.1	3.22	12
DCR-H8	4.3	6.34	2.4	3.8	12
HDR-H8	4.3	6.34	2.4	3.8	12
DCR-H10	5.5	7.4	3	4.77	12
HDR-H10	5.5	7.4	3	4.77	12
DCR-H12	6.6	8.2	3.6	5.56	12
HDR-H12	6.6	8.2	3.6	5.56	12