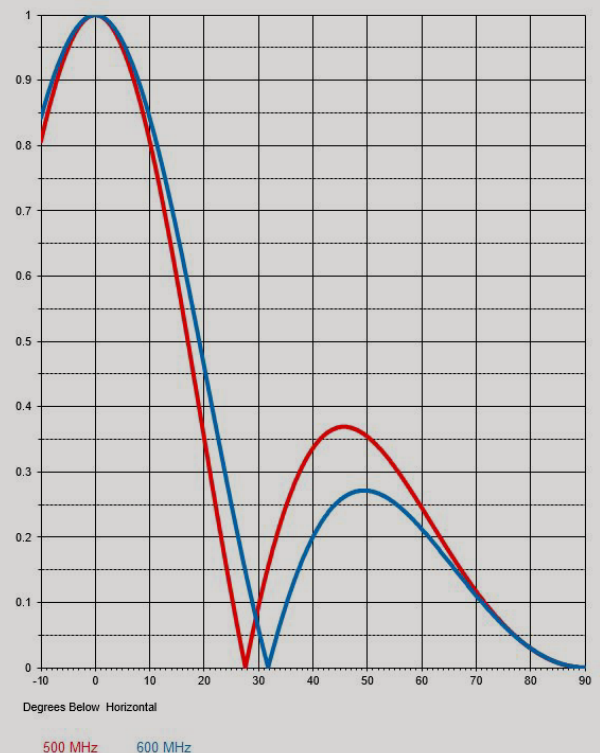


Dielectric's TFU-UT Series turnstile antenna is designed for broadband omni directional horizontally polarized operation. The TFU-UT features a simple feed system and durable construction. The antenna design allows for dual inputs that have been developed for single channel or the simultaneous broadcast of two channels without the need for a combiner.

Specifications:

- Operating Range: 470-608 MHz
- Horizontally polarized
- Economical broadband design
- Self-supporting
- Can be side or top mounted on tower
- 7-16 DIN input 1000 W average power rating
- Type N input 500 W average power rating
- Low VSWR
- Aluminum construction
- ABS radome for environmental protection



Trusted for Decades. Ready for Tomorrow.

Electrical Specifications

	VSWR	Input	Power Rating Per Input	Gain
TFU-UT-1	1.15:1	7-16 DIN	1kW	5 dBd

Mechanical Specifications

Model	Height ft(m)	Weights lbs (kg)	Windload ft ² (m ²)
TFU-UT	3.74 (1.14)	55 (25)	3.2

All specifications are subject to change.

Trusted for Decades. Ready for Tomorrow.

22 Tower Rd., Raymond, ME 04071 USA • 1-800-341-9678 • Dielectric.com