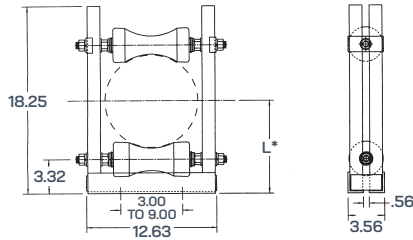


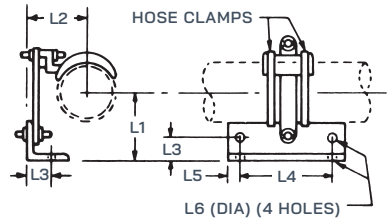
Supports single horizontal line.
 Two required for dual lines.
 Mounting bolts not supplied.
 Rollers accommodate no vertical movement; use 3-point suspension hangers for horizontal runs when length of vertical run or stiffness of line will require vertical as well as horizontal movement of the horizontal run.

Horizontal Roller Assembly

| T/L Size | Catalog Number | L |
|----------|----------------|--------|
| 1 5/8" | 270-027 | — |
| 3 1/8" | 370-027 | — |
| 4 1/16" | 470-027 | 6 1/2" |
| 6 1/8" | 670-027 | 7 1/2" |
| 7 3/16" | 770-027 | 8" |
| 8 3/16" | 870-027 | 8 1/2" |
| 9 3/16" | 970-027 | 9 |



*L DIM IS ADJUSTABLE & INDICATES MIN.



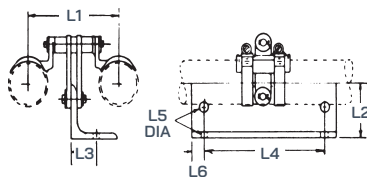
Single Swivel Hangers

| T/L Size | Catalog Number | L1 | L2 | L3 | L4 | L5 | L6 Dia. | Approx. Weight |
|----------|----------------|----------|--------|--------|----|------|---------|----------------|
| 1 5/8" | 270-030 | 2 1/16" | 1 1/2" | 1 1/8" | 5" | 1/2" | 9/32" | 2 lbs |
| 3 1/8" | 370-030 | 2 17/32" | 2 7/8" | 1 1/8" | 5" | 1/2" | 7/16" | 2 lbs |

For dual horizontal line runs.
 Takes care of some horizontal line expansion but permits no vertical movement. Use 3-point suspension hangers for horizontal runs when length of vertical run or stiffness of line will require vertical as well as horizontal movement of the horizontal run.

Dual Swivel Hangers

| T/L Size | Catalog Number | L1 | L2 | L3 | L4 | L5 Dia. | L6 | Approx. Weight |
|----------|----------------|--------|----------|--------|----|---------|------|----------------|
| 1 5/8" | 270-031 | 3 3/4" | 2 1/16" | 1 1/8" | 5" | 7/16" | 1/2" | 3 lbs |
| 3 1/8" | 370-031 | 5 1/2" | 2 15/32" | 1 1/8" | 5" | 7/16" | 1/2" | 4 lbs |



Insulated Hangers

Available for FM installations onto AM towers. Contact factory for details,

For spring tension charts refer to installation guide.