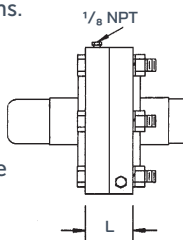


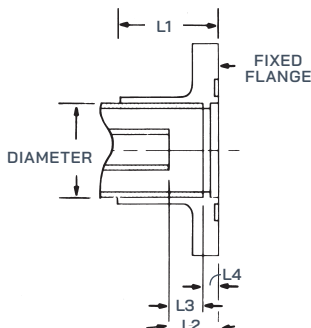
Gas stop for nominal pressure differential. Installs between two flanged line sections. Includes inner-conductor connector, one O-ring and complete hardware (long bolts).



## Gas Stop

T/L Size	Catalog Number	Impedance in Ohms	L	Approx. Weight
1 5/8"	275-005	50	0.88"	4 lbs
3 1/8"	375-005	50	1.50"	7 lbs
4 1/16"	475-005	50	1.50"	12 lbs
6 1/8"	675-005	50	2.00"	16 lbs
6 1/8"	677-005	75	2.00"	18 lbs
7 3/16"	777-005	75	2.25"	22 lbs
8 3/16"	877-005	75	2.38"	35 lbs
9 3/16"	975-005	50	2.00"	40 lbs
9 3/16"	977-005	75	2.38"	40 lbs

Flange for field installation by soft soldering. Includes solder, liquid flux, brush, garnet paper and cleaner.



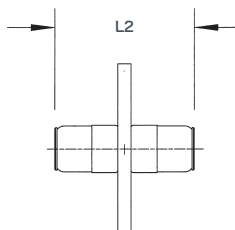
## Soft Solder Flange

This table shows cut back for 20' sections.

T/L Size	Catalog Number	Ohms	L1	L2	L3	L4	Approx. Weight
1 5/8"	270-014	50	1.94"	0.59" ± 0.03"	0.40" ± 0.03"	.187"	2 lbs
3 1/8"	370-014	50	2.13"	0.91" ± 0.03"	0.47" ± 0.03"	.437"	3 lbs
4 1/16"	470-014	50	2.19"	1.22" ± 0.03"	0.85" ± 0.03"	.375"	6 lbs
6 1/8"	670-014	50	3.53"	1.28" ± 0.03"	0.90" ± 0.03"	.375"	7 lbs
6 1/8"	670-014	75	3.53"	1.22" ± 0.03"	0.84" ± 0.03"	.375"	7 lbs
7 3/16"	770-014	75	3.50"	1.41" ± 0.03"	0.85" ± 0.03"	.562"	10 lbs
8 3/16"	870-014	75	6.13"	1.59" ± 0.03"	1.22" ± 0.03"	.375"	12 lbs
9 3/16"	970-014	50	6.50"	1.78" ± 0.03"	1.15" ± 0.03"	.626"	14 lbs
9 3/16"	970-014	75	6.50"	1.59" ± 0.03"	0.97" ± 0.03"	.626"	14 lbs

Note the cut back difference between 50 & 75 ohms and 6 1/8 & 9 3/16. The given dimensions are for cutting back the inner and outer conductor of transmission line onto the end of which a flange is to be installed.

Anchor connector (inner-conductor connector and insulator).

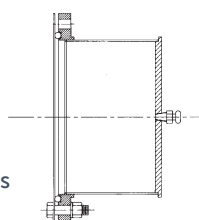


## Connector Anchor Insulator

T/L Size	Catalog Number	Impedance in Ohms	L1	L2	Approx. Weight
1 5/8"	275-011	50	1 5/8"	3 1/8"	3.5 oz
3 1/8"	375-011	50	1 3/4"	4 1/8"	13 oz
4 1/16"	475-011	50	2 3/8"	5 3/8"	2 lbs
6 1/8"	675-011	50	2 1/2"	5 1/2"	2 lbs
6 1/8"	677-011	75	2 3/8"	5 3/8"	2 lbs
7 3/16"	777-011	75	2 3/4"	5 1/16"	2 lbs
8 3/16"	877-011	75	3 1/8"	6 1/16"	2 lbs
9 3/16"	975-011	50	3 1/2"	6 31/32"	5 lbs
9 3/16"	977-011	75	3 1/8"	6 1/8"	2 lbs

End cap with gas port. Includes O-ring and hardware kit.

For temporary closure of transmission line to prevent entrance of moisture. Includes pipe plug.



## End Cap

T/L Size	Catalog Number	Approx. Weight
1 5/8"	270-024	7 oz
3 1/8"	370-024	5 lbs
4 1/16"	470-024	7 lbs
6 1/8"	670-024	10 lbs
7 3/16"	770-024	12 lbs
8 3/16"	870-024	14 lbs
9 3/16"	970-024	15 lbs