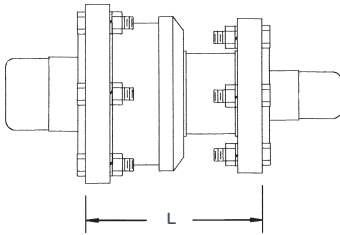
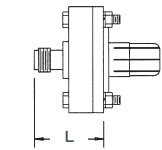


Reducer to smaller line constant impedance. Includes inner conductor connector, O-rings and hardware.

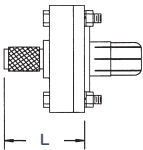


**Reducer**

T/L Size	Smaller Size	Catalog Number	Impedance in Ohms	L	Approx. Weight
1 5/8"	7/8"	275-060	50	1.75"	2 lbs
3 1/8"	7/8"	375-061	50	1.25"	5 lbs
3 1/8"	1 5/8"	375-060	50	0.875"	6 lbs
4 1/16"	3 1/8"	475-060	50	4.00"	10 lbs
6 1/8"	3 1/8"	675-061	50	6.75"	14 lbs
6 1/8"	4 1/16"	675-060	50	5.00"	16 lbs
8 3/16"	7 3/16"	877-061	75	9.00"	22 lbs
8 3/16"	6 1/8"	877-060	75	9.31"	21 lbs
9 3/16"	6 1/8"	975-061	50	9.00"	25 lbs
9 3/16"	6 1/8"	977-061	75	10.00"	25 lbs
9 3/16"	8 3/16"	977-060	75	9.00"	32 lbs



REDUCER TO TYPE "N" (FEMALE)



REDUCER TO TYPE "N" (MALE)

**Quick Step Reducer to Type "N"**

Female Type "N" Connector

T/L Size	Catalog Number	Impedance in Ohms	L	Approx. Weight
1 5/8"	275-063	50	2.19"	2 lbs
3 1/8"	375-063	50	1.75"	3 lbs
4 1/16"	475-063	50	1.87"	4 lbs

Male Type "N" Connector

1 5/8"	275-062	50	2.19"	2 lbs
3 1/8"	375-062	50	1.75"	3 lbs

**Cutoff Guide for Outer Conductor**

Includes Clamp

Outer Conductor O.D.	Catalog Number	Approx. Weight
1 5/8"	270-040	1 lb
3 1/8"	370-040	2 lbs
4 1/16"	470-040	3 lbs
6 1/8"	670-040	6 lbs
7 3/16"	770-040	8 lbs
8 3/16"	870-040	10 lbs
9 3/16"	970-040	11 lbs

**O-Ring Buna-"N"**

T/L Size	Catalog Number
1 5/8"	270-010
3 1/8"	370-010
4 1/16"	470-010
6 1/8"	670-010
7 3/16"	770-010
8 3/16"	870-010
9 3/16"	970-010

**Cutoff Guide for Inner Conductor**

Includes Clamp

Inner Conductor O.D.	Catalog Number	Impedance in Ohms	Approx. Weight
1 5/8"	270-041	50	3 oz
3 1/8"	375-041	50	6 oz
4 1/16"	475-041	50	8 oz
6 1/8"	675-041	50	6 oz
6 1/8"	677-041	50	6 oz
7 3/16"	777-041	75	1 lb
8 3/16"	877-041	50	1.5 lbs
9 3/16"	975-041	50	6 oz
9 3/16"	970-041	50	1.5 lbs