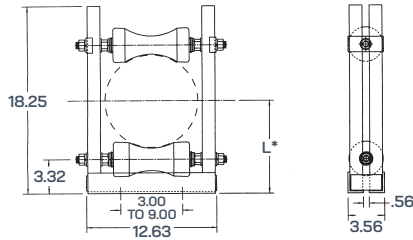


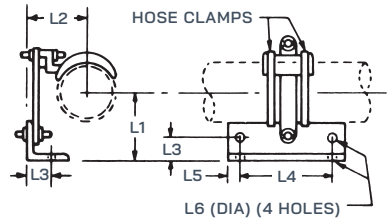
Supports single horizontal line.
Two required for dual lines.
Mounting bolts not supplied.
Rollers accommodate no vertical movement; use 3-point suspension hangers for horizontal runs when length of vertical run or stiffness of line will require vertical as well as horizontal movement of the horizontal run.

Horizontal Roller Assembly

T/L Size	Catalog Number	L
1 5/8"	270-027	—
3 1/8"	370-027	—
4 1/16"	470-027	6 1/2"
6 1/8"	670-027	7 1/2"
7 3/16"	770-027	8"
8 3/16"	870-027	8 1/2"
9 3/16"	970-027	9



*L DIM IS ADJUSTABLE & INDICATES MIN.



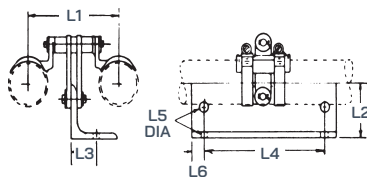
Single Swivel Hangers

T/L Size	Catalog Number	L1	L2	L3	L4	L5	L6 Dia.	Approx. Weight
1 5/8"	270-030	2 1/16"	1 1/2"	1 1/8"	5"	1/2"	9/32"	2 lbs
3 1/8"	370-030	2 17/32"	2 7/8"	1 1/8"	5"	1/2"	7/16"	2 lbs

For dual horizontal line runs.
Takes care of some horizontal line expansion but permits no vertical movement. Use 3-point suspension hangers for horizontal runs when length of vertical run or stiffness of line will require vertical as well as horizontal movement of the horizontal run.

Dual Swivel Hangers

T/L Size	Catalog Number	L1	L2	L3	L4	L5 Dia.	L6	Approx. Weight
1 5/8"	270-031	3 3/4"	2 1/16"	1 1/8"	5"	7/16"	1/2"	3 lbs
3 1/8"	370-031	5 1/2"	2 15/32"	1 1/8"	5"	7/16"	1/2"	4 lbs



Insulated Hangers

Available for FM installations onto AM towers. Contact factory for details.

For spring tension charts refer to installation guide.