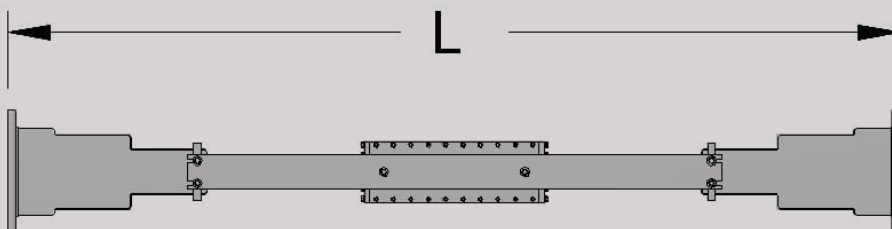
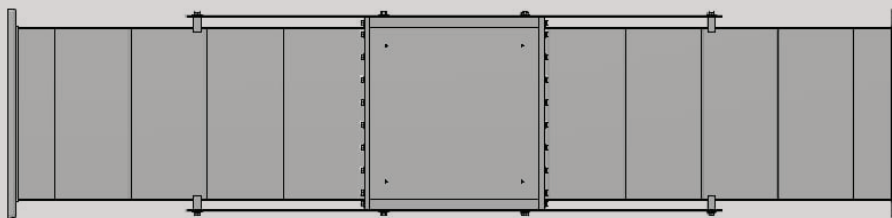


Key Features:

- Suitable for analog TV, digital TV
- Indoor applications
- Low insertion loss figures
- High rejection of the harmonic products



Trusted for Decades. Ready for Tomorrow.

Typical Specifications for 6 MHz TV Standard

PARAMETER	SPEC		
Model Number	HUW18	HUW15	HUW11
Frequency	470-494 MHz	494-650 MHz	650-860 MHz
Average Power Handling	≤112.5 kW	≤112.5 kW	≤112.5 kW
VSWR	<1.04	<1.04	<1.04
Insertion Loss	≤0.1 dB	≤0.1 dB	≤0.1 dB
Rejection			
2nd Order	> 50 dB	> 50 dB	> 50 dB
3rd Order	> 50 dB	> 50 dB	> 50 dB
Connectors	WR 1800	WR 1500	WR 1150
Ambient Temp.	32°F (0°C) to 113°F (45°C)	32°F (0°C) to 113°F (45°C)	32°F (0°C) to 113°F (45°C)
Storage Temp.	32°F (0°C) to 122°F (50°C)	32°F (0°C) to 122°F (50°C)	32°F (0°C) to 122°F (50°C)
Ambient/ Storage Humidity	0-98% non condensing		
Material	Al	Al	Al
Dimensions (L)	98" (2,500 mm)	79" (2,007 mm)	57.5" (1,461 mm)
Weight	Contact Factory		
Max Altitude	10,000 feet (3,050 m)		
Application	ATV/DTV		

Trusted for Decades. Ready for Tomorrow.

22 Tower Rd., Raymond, ME 04071 USA • 1-800-341-9678 • Dielectric.com