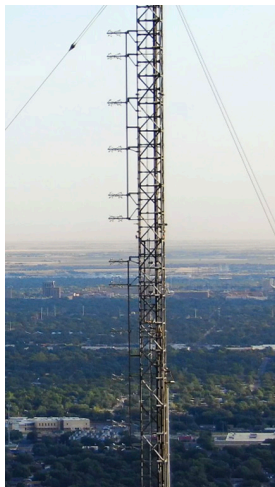


Dielectric®

RINGMASTER™ ANTENNA

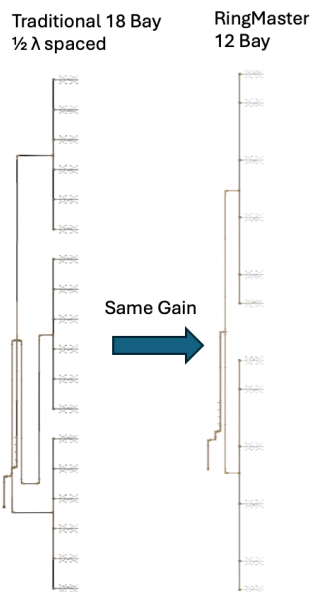


The broadcast industry has long relied on proven FM antenna designs that, while effective, have remained largely unchanged for decades. However, in a landscape driven by continuous innovation, the need for a more economical, efficient, and adaptable solution has never been greater. Enter the RingMaster™ FM antenna—a cutting edge breakthrough set to transform the way broadcasters approach FM transmission.

RingMaster™
Maximizing DCR
Antenna Performance

Key Features

- With up to 33% fewer components than traditional broadband FM antennas, the RingMaster™ offers a more cost-effective solution without compromising performance.
- In addition to reducing overall system complexity and tower load, the RingMaster™ introduces an unprecedented level of control in shaping the elevation pattern, empowering broadcasters with a level of flexibility that was previously difficult, if not impossible, to achieve.
- The basic design of the RingMaster™ incorporates combination of full and half wave spaced elements which maintains broadband performance.
- This concept can be applied to any of Dielectric's ring style antennas, DCR-H, DCR-C, DCR-M, DCR-S, and the DCR-U.



Comparison of traditional
18 bay and equivalent gain
12 bay RingMaster™

Dielectric.com

(800) 341-9678

